



Green Magic

Sample ID: G0H0178-01

Matrix: Industrial Hemp

Test ID: 5002535

Source ID:

Date Sampled: 08/11/20

Date Accepted: 08/11/20

Batch Lot ID: 6/25/2020

Arete Hemp LLC

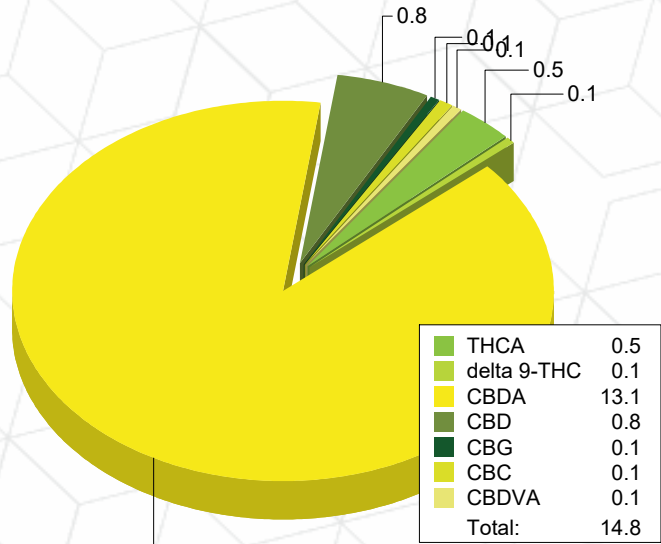
Potency Analysis

Date/Time Extracted: 08/12/20 13:48

Analysis Method/SOP: 215

Batch Identification: 2033031

	LOQ (%)	% by Wt.	mg/g	Cannabinoids Profile
Total THC	0.0098	0.5258	5.258	
Total CBD	0.0090	12.29	122.9	
Total CBG	0.0009	0.1057	1.057	
THCA	0.0032	0.4873	4.873	
delta 9-THC	0.0098	0.0984	0.984	
THCV	0.0055	< LOQ	< LOQ	
THCVA	0.0020	< LOQ	< LOQ	
CBD	0.0067	0.8136	8.136	
CBDA	0.0090	13.09	130.9	
CBDV	0.0054	< LOQ	< LOQ	
CBDVA	0.0018	0.0823	0.823	
CBN	0.0032	< LOQ	< LOQ	
CBG	0.0009	0.1057	1.057	
CBGA	0.0009	< LOQ	< LOQ	
CBC	0.0097	0.1138	1.138	



Moisture

Date/Time Extracted: 08/13/20 16:35

Analysis Method/SOP: 103

Moisture: 7.78 %

Action Level: 15%

Potency results are reported on a dry weight basis.

Total THC = delta 9-THC + (THCA * 0.877)

Total CBD = CBD + (CBDA * 0.877)

Total CBG = CBG + (CBGA * 0.878)

LOQ=Limit of Quantification, the lowest measurable concentration of an analyte.



ISO 17025
ACCREDITED
LABORATORY

Eric Wendt
Chief Science Officer - 8/13/2020

All QC samples met acceptance criteria of the method; data available upon request. These results relate only to the sample included on this report. The report may not be reproduced except in full, without the written permission of Green Leaf Lab.

Lab results apply to the sample as received, samples were not collected per OAR 333-007 requirements